

Circulatory YKL-40 & NLR: Underestimated Prognostic Indicators in Diffuse Glioma

Puneet Gandhi^{1*}, Richa Khare¹, Hanni VasudevGulwani², Sukhpreet Kaur²

1. Department of Research, Bhopal Memorial Hospital and Research Centre, Bhopal, India.

2. Department of Pathology, Bhopal Memorial Hospital and Research Centre, Bhopal, India.

Submitted 27 March 2018; Accepted 15 July 2018; Published 29 July 2018

In addition to histopathological parameters, evaluation of associated hematological factors is essential for devising a sensitive prognostic scale in glioma. Increased neutrophil-lymphocyte ratio (NLR), a marker of systemic inflammatory response, has recently been associated with worse outcome in various cancers. Given that glioma progression is characterized by inflammation, aggressive angiogenesis, and invasion, increased levels of systemic human-chitinase-3-like-one protein (YKL-40) have also been linked to poor prognosis. The aim of the present study was to assess the plausible association of YKL-40, NLR, and platelet count with increasing tumor grade, and evaluate their status as independent prognostic factors in terms of overall survival (OS) in treatment naive patients with diffuse glioma. Plasma levels of both biochemical markers in 72 diffuse gliomas, median age 42 years, were compared with 36 controls. Comparison of YKL-40, NLR, and PC with respect to tumor grade was found to be significant for each of the markers ($P < 0.0001$) while an inverse significant correlation was seen for YKL-40 and NLR with OS ($r = -0.4619$, $P < 0.0001$, and $r = -0.5561$, $P < 0.0001$, respectively). NLR was the best performing marker with AUC 0.9417 at 97% specificity. In addition, YKL-40 had a positive correlation with NLR ($r = 0.4902$, $P < 0.0001$), indicating that expression of both markers was linked to inflammation and tumor progression as they were significantly correlated with tumor grade. Expression of YKL-40 and NLR was independently associated with worse survival (HR 1.0062, $P = 0.039$, and HR 1.1787, $P = 0.0003$, respectively), thus establishing their clinical utility as prognosticators for diffuse gliomas.

Key words: Diffuse glioma, YKL-40, neutrophil-lymphocyte ratio, overall survival, prognostic marker, tumor progression

Gliomas are aggressive and lethal brain cancers (1) with a median survival of 15-18 months (2), and characterized by massive inflammation. This systemic response plays a vital role in cancer progression. Therefore, monitoring inflammation

with reference to disease progression is being clinically recognized (3). Chronic inflammation leads to activation of a complex integrated system of mechanisms designed to eliminate the stimulus, repair damaged tissue, and promote wound healing

* Corresponding author: Department of Research, Bhopal Memorial Hospital and Research Centre, Bhopal, India.
Email: puneetgandhi67@yahoo.com

through organized cellular changes that can be measured in blood. The magnitude of activation of this systemic reaction can be measured in terms of circulating white cells, polymorphs, and acute phase proteins (4). In the current decade, blood as a liquid biopsy sample has been recognized as a source of novel biomarkers, and the most practical screening tool. This basis led us to look for circulating inflammatory markers in glioma that could be cost effective and evaluated with minimal invasiveness and higher specificity.

Human chitinase-3-like-protein-1 (CHI3L1, also known as YKL-40), an acute-phase glycoprotein, is elevated in cancers and inflammatory diseases (5) but its clinical application remains restricted. It is secreted by activated macrophages and neutrophils in glioma (6) and is also linked to inflammation (7, 8), angiogenesis (9), cell proliferation, and invasion (10). CHI3L1 is considered to promote Th2-type inflammation as well as enhance tissue remodelling and repair (11). In their study, Low et al. have discussed that an increased *CHI3L1* expression appears to be an important hallmark of inflammation and cancer has been frequently observed in patients with poor prognosis (12).

Similarly, neutrophils are the most abundant white blood cells, and are the first to be recruited to inflammatory sites. The interaction between neutrophils and lymphocytes in response to inflammation is of significance in tumorigenesis (13). In recent studies, neutrophil-lymphocyte ratio (NLR), a haematological marker of systemic inflammation, has been identified as a crucial prognostic biomarker in different cancers (14, 15). An earlier work on glioblastoma by Han et al. demonstrated that pre-treatment NLR was of prognostic significance independent of *O*-methylguanine-DNA methyltransferase (MGMT) status (16). However, there is a recent contradictory study by Lopes et al. which has stated that there is no correlation between an elevated NLR and worse

survival in glioblastoma (17).

Likewise, platelet count (PC) is linked to vessel wall integrity and upon activation; these cells release factors which affect angiogenic activity (18). The present assessment was meant to ascertain the plausible association of YKL-40, NLR, and PC with tumor grade, and evaluate their status as independent prognostic markers in terms of overall survival (OS) in therapy naïve glioma patients.

Materials and methods

Patients

A total of 72 patients admitted for surgery with an initial radiological diagnosis of suspected glioma were considered for this study. Inclusion criteria were- both symptomatic males and females with neurological deficit and no prior chemotherapy or radiotherapy. Glioma grade (II, III & IV) as confirmed by histopathological report, and control subjects without any recent clinical history of inflammation as indicated by their biochemical profile, were taken up for analysis. Exclusion criteria was low grade I glioma (pilocytic).

Variable factors such as age, site of tumor (frontal or non-frontal) and extent of resection in terms of gross total resection (GTR) and subtotal resection (STR) were tabulated from surgical records. The identified biomarkers were compared with baseline values of 36 healthy subjects which served as controls. The study was a part of the project approved by the institutional ethics committee (IEC/21/Res/11) and all subjects provided written informed consent.

All patients were on steroids 24 h prior to surgery. Computed tomography (CT) or magnetic resonance imaging (MRI) was used for initial identification and localization of the tumor. OS time was calculated as the length of time from the start of treatment for glioma till the date of death for a deceased patient, or up to the last follow-up for a surviving patient.

Sample collection and storage

Upon obtaining informed consent, 3 ml of peripheral blood was collected from each pre-surgery patient and also from healthy volunteers. Samples were processed at 12 °C, plasma was separated and divided into aliquots, then frozen at -80 °C for further experimentation.

Blood Count

The pre-operative total WBC count along with the percentage of neutrophils and lymphocytes were provided by the pathologist to estimate the absolute neutrophils and lymphocyte counts. NLR and PC were then calculated from this full blood count performed before intervention.

YKL-40 evaluation

Plasma YKL-40 concentrations (ng/mL) were determined by a sandwich ELISA assay using the commercial kit from R&D Systems, USA (Catalog no. DC3L10). The protocol was executed according to the manufacturer's instructions. All samples were analyzed in duplicate. YKL-40 levels were measured as absorbance at 450 nm with the correction wavelength set at 540 nm.

IgE assessment

Serum IgE levels were recorded from the clinical profile of the patients to confirm that they had no infection at the time of blood sampling. Values were compared within study groups to demarcate that elevated levels of YKL-40 and NLR were due to inflammation on tumor initiation.

Statistical analysis

Kruskal-Wallis test was applied to assess the significance of preoperative levels of each biomarker YKL-40, NLR and PC with tumor grade. Mann-Whitney test was performed to compare YKL-40, NLR and PC with OS, when the patients were stratified into 2 groups based on OS of ≤ 15 and >15 months. Spearman's correlation coefficient was used to calculate the strength of the relationship of markers with tumor grade and OS. With respect to YKL-40, NLR and PC, receiving operating characteristic (ROC) curve analysis was performed to determine the cut-off value of each

biomarker for predicting survival with high sensitivity and specificity. Survival curves were made using Kaplan-Meier method, and compared using log-rank analysis. Patients who were still alive at last contact were treated as censored events in the analysis. Multivariate Cox regression was performed to calculate hazards ratio (HR) with 95% confidence interval (CI) for each biomarker as a continuous variable. A 2-sided $P < 0.05$ was taken as statistically significant.

Results

Patients profile

This is the first cross-sectional study on treatment-naive patients with diffuse glioma (grade II, III & IV) to assess preoperative YKL 40, NLR, and PC as independent prognostic indicators. The reported tumor grade was taken as a base criterion, and the samples were further stratified on the basis of WHO classification, 2016 (19). 23 cases were isocitrate dehydrogenase (IDH)- mutant WHO grade II diffuse astrocytomas, 15 cases were IDH-mutant WHO grade III anaplastic astrocytomas, 4 cases were of anaplastic oligodendroglioma (NOS), and 30 cases of IDH-wild type WHO grade IV glioblastoma. The median age was 42 years, and the cohort had 58 males while 14 were female patients. A median OS of 30, 15 and 6.5 months for grade II-IV was calculated for the cohort (Table 1). Post-operative summary of enrolled subjects presented 32 cases as frontal tumors, with gross total resection achieved only in 14 cases.

Statistical analysis using Kruskal-Wallis test (non-parametric) for comparison of YKL-40, NLR and PC with respect to tumor-grade was found to be significant for YKL-40 ($P < 0.0001$), NLR ($P < 0.0001$), and PC ($P < 0.0001$) (Fig.1) indicating changes in plasma levels with respect to tumor grade when compared with healthy controls.

Mann-Whitney test revealed that all three parameters, YKL-40, NLR, and PC were significantly different in patients with OS of ≤ 15

and >15 months ($P < 0.0001$, $P < 0.0001$, and $P = 0.0002$, respectively).

Correlation

The correlation of preoperative YKL-40, NLR, and PC with OS was analyzed using Spearman's rho correlation coefficient. A significant positive correlation of YKL-40 ($r = 0.5252$, $P < 0.0001$), NLR ($r = 0.5041$, $P < 0.0001$) and PC ($r = 0.3583$, $P = 0.002$) was obtained with respect to tumor grade while a significant inverse correlation of YKL-40 ($r = -0.4619$, $P < 0.0001$), NLR ($r = -0.5561$, $P < 0.0001$), and PC ($r = -0.4464$,

$P < 0.0001$) was reached with OS. These statistics indicated that all the three markers were significantly correlated with tumor grade and OS. In addition, YKL-40 had a positive significant correlation with NLR ($r = 0.4902$, $P < 0.0001$), indicating that expression of both markers was linked to inflammation. Since YKL-40 and NLR had a positive correlation with tumor grade, it indicates that as the tumor progresses, the levels of YKL-40 and NLR would increase concomitantly. Hence, both markers can be taken to connote the tumor load of a glioma patient.

Table 1. Demographic and evaluated parameters of glioma patients.

Parameters	Control (n=30)	Grade II (n=23)	Grade III (n=19)	Grade IV (n=30)
Age (years)	25 (21-50)	26 (13-65)	38 (20-75)	51.5 (25-76)
YKL-40 (ng/ml)	28.89 (1.119-66.55)	46.08 (14.89-167.987)	72.682(22.448-170.75)	101.15 (21.20-198.77)
NLR	1.62 (0.87-2.8)	3.2 (1.23-11.5)	4.33 (2.0-15)	5.59 (3.1-18)
PC ($10^{11}/l$)	1.735 (0.86-2.74)	1.87 (1.17-3.86)	2.02 (1.13-3.63)	2.45 (1.2-5.77)
OS (months)	-	40 (16-159)	17 (1-46)	6.5 (1-39)

YKL-40: human chitinase-3-like-protein-1; NLR: neutrophil-lymphocyte ratio; PC: platelet count; OS: overall survival. All parameters are presented as median values.

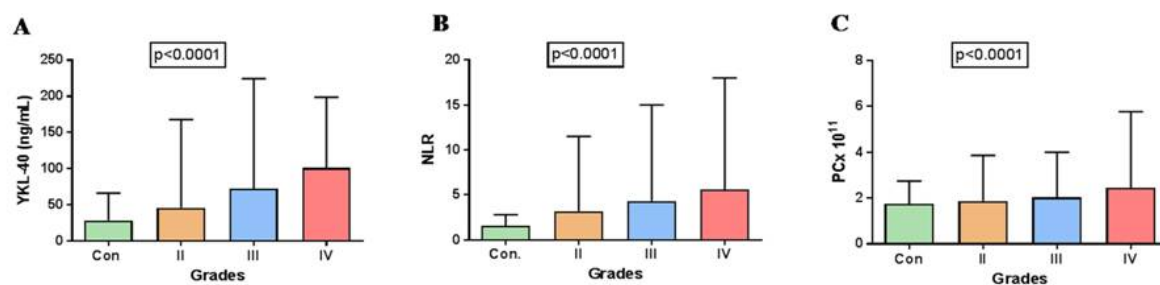


Fig. 1. Bar graphs showing the comparison of evaluated blood based markers between tumor grades. A: YKL-40; B: NLR; C: PC. Error bars represent the range of quantified values of each marker.

Table 2. The cut-off points for biomarkers with their sensitivity and specificity values obtained from glioblastoma circulatory levels.

Biomarker	Cut-off Point	Sensitivity (%)	Specificity (%)	LR	AUC of ROC (%)	P- value
YKL-40(ng/ml)	> 42.55	80.56	83.33	4.833	87.92	<0.0001****
NLR	>2.775	80.56	97.22	29	94.17	<0.0001****
PC ($10^{11}/l$)	>1.790	79.17	58.33	1.9	75.08	<0.0001****

YKL-40: human chitinase-3-like-protein-1; NLR: neutrophil-lymphocyte ratio; PC: platelet count; **** highly significant.

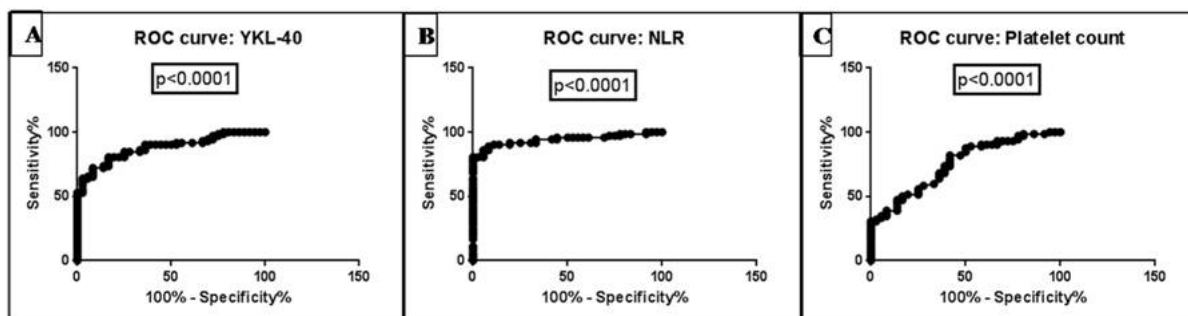


Fig. 2. ROC curves of (A) YKL-40, (B) NLR, and (C) PC.

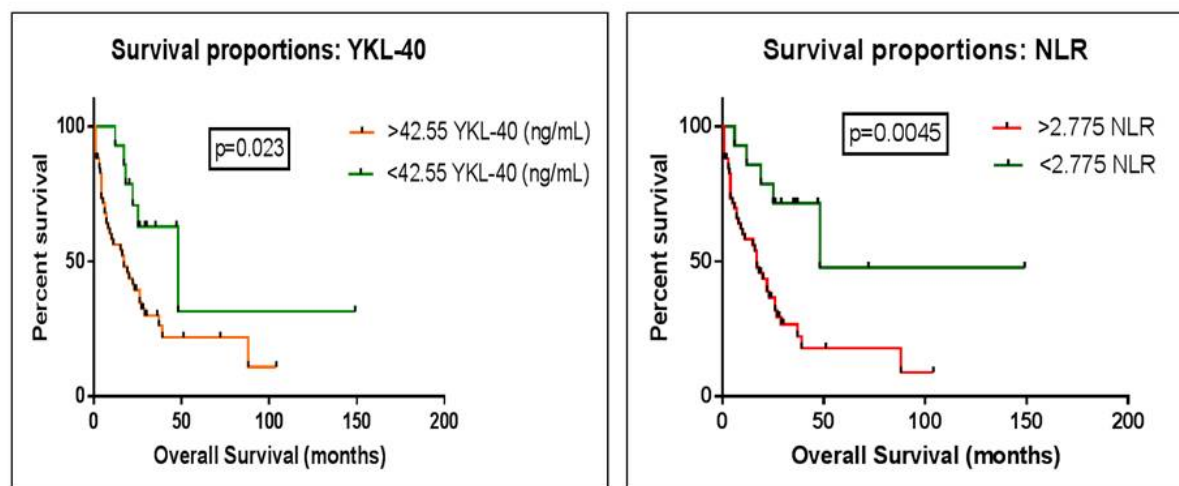


Fig. 3. Comparison of survival curves between two defined groups based on ROC cut-offs, to best predict survival. Kaplan-Meier curve for (A) YKL-40 & (B) NLR.

ROC curve analysis

The AUROC analysis provided an optimal cut-off value for YKL-40, NLR, and PC to differentiate between control and glioma patients. Area under the curve (AUC) for YKL-40, NLR, and PC was 0.8792 ($P < 0.0001$), 0.9417 ($P < 0.0001$), and 0.7508 ($P < 0.0001$), respectively at $>80\%$ sensitivity and specificity for all markers (Table 2; Fig. 2 A-C).

Kaplan-Meier method and log-rank test

In lieu of the above results, comparison of survival curves between control and glioma patients with optimal cut-off value to best predict survival using log-rank (Mante-Cox) test was undertaken. Patients with a value of YKL-40 exceeding 42.55 were found to differ significantly from those with values <42.55 and had a decreased survival time (17 vs. 48 months, HR 0.3542 with 95% CI: 0.1499

to 0.8365, $P = 0.023$). Value of NLR exceeding 2.775 was found to differ significantly from those with an NLR quotient of < 2.775 , and could even distinguish low grade glioma. A decreased survival time (17 vs. 48 months, HR 0.3542 with 95% CI: 0.1398 to 0.8974, $P = 0.0045$) (Fig. 3) was recorded in glioma patients. The value of PC did not reach statistical significance (HR 0.375 with 95% CI: 0.1746 to 0.8052, $P = 0.0890$). Curve analysis depicted that the makers YKL-40 and NLR related significantly with OS, and can thus serve as good prognosticators for glioma.

Multivariate Cox proportional hazards ratio

Increase in systemic levels of YKL-40 and NLR was independently associated with worse survival in glioma. When these markers were analyzed as continuous variables, Cox proportional hazards analysis demonstrated a trend towards

significantly worse OS for both the prognostic markers YKL-40 and NLR (HR 1.0062, $P = 0.039$, and HR 1.1787, $P = 0.0003$, respectively).

We also performed multivariate analysis of the established confounding factors i.e. age, site of tumor, and extent of surgical resection; which showed that higher plasma levels of YKL-40 and NLR were not associated with age ($P = 0.174$; $P = 0.131$, respectively), site ($P = 0.300$; $P = 0.4798$, respectively), and extent of resection ($P = 0.205$; $P = 0.186$, respectively).

Discussion

The effect of chronic inflammation that develops in the glial tumor microenvironment has far reaching consequences beyond its tumor initiating effect, as it adds on to glioma progression, a stage of the disease that loops back, adding to the intensity of the underlying inflammation.

Experimental studies suggest that inflammation has an important place in the carcinogenesis of high grade gliomas (20, 21) which can be estimated via cells and proteins derived from the peripheral blood. Our test reports indicate the values of NLR to be positively correlated with poor OS ($P < 0.0001$), and tumor grade ($P < 0.0001$), which is in line with our previous study (22), highlighting that NLR score is a good indicator of prognosis and survival in these patients. In agreement our earlier studies carried out only on glioblastoma patients describing NLR to be significantly correlated with OS (23-25) and tumor grading (26). The present study has then provided the first experimental data-based evidence that NLR can be used as an independent prognosticator of all grades of diffuse glioma.

Higher serum levels of inflammatory marker YKL-40 are associated with poor prognosis as ascertained in studies on cancer (27), and also in inflammatory diseases (28-30). Two previous serum-based investigations reported YKL-40 to be associated with tumor grade (31) and OS in high

grade glial samples, grade III and IV (32), also indicating potential tumor burden (33). According to Iwamoto et al., increased serum YKL-40 levels were associated with glioma subtypes and poor OS (6), while Bernardi et al. recorded higher serum values among patients with subtotal resection (34). A single study by Gallego et al. on plasma levels of YKL40 suggested that it can be used to differentiate between glioblastoma and non-glial brain tumors (35). The current data also shows plasma YKL-40 to be positively correlated with poor OS ($P < 0.0001$), NLR ($P < 0.0001$), and progressing tumor grade of patients ($P < 0.0001$), clearly demonstrating tumor load.

In this reference, Schultz et al. have shown that repetitive freezing and thawing of plasma samples up to nine times has no effect on plasma YKL-40 levels (36). They documented YKL-40 in plasma to increase by more than 25% following an inflammatory stimulus, thus making it easily detectable. Since plasma reflects the biology of not only tumor cells but also the microenvironment, it becomes a more reliable sample type to evaluate YKL-40 in combination with a panel of other biomarkers for monitoring progress of disease activity.

A significant inverse correlation of PC with OS ($P < 0.0001$) and positive association with tumor grade ($P = 0.002$) was found in test group. In support is the study of 24 glioblastoma patients (37), stating that elevated preoperative platelet counts are associated with significantly shorter survival (38). But our comparison of PC with OS based on AUROC analysis cut-off was non-significant, thereby indicating that PC cannot be taken as a prognostic indicator; which is supported by two earlier negative studies in glioblastoma patients (39, 40).

Our findings demonstrate that values of markers of inflammation, that is YKL-40 and NLR, correlate with tumor grade and OS in therapy-naive diffuse glioma. Comparison of IgE levels within

study groups confirmed that elevated values of YKL-40 and NLR were due to tumor burden, establishing the credibility of these circulating markers.

The present investigation clearly delineates that preoperative YKL-40 and NLR can be efficaciously used to follow up diffuse glioma to assess the disease outcome, after adjusting for associated variables of age, tumor site, and extent of resection. The result of this study further identifies the need for validation of these easily accessible, cost-effective, minimally invasive parameters in larger multicentric cohorts; before they can be incorporated into clinical care.

Acknowledgements

The present study is part of approved project IEC/21/Res/11. Authors are grateful to Madhya Pradesh Biotechnology Council (project no.249) for financial assistance and Bhopal Memorial Hospital and Research Centre for infrastructural facilities. Authors are also thankful to Dr. Nitin Garg, Department of Neurosurgery, Bansal Hospital, Bhopal and Dr. Sandeep K Sorte, Department of Neurosurgery, Bhopal Memorial Hospital and Research Centre, Bhopal for patient referral.

Conflict of Interests

The authors declare that they have no conflict of interest

References

1. Wybranska I, Polus A, Mikolajczyk M, et al. Apoptosis-related gene expression in glioblastoma (LN-18) and medulloblastoma (Daoy) cell lines. *Hum Cell* 2013;26:137-48.
2. Liu Y, Shete S, Etsel CJ, et al. Polymorphisms of LIG4, BTBD2, HMG2, and RTEL1 genes involved in the double-strand break repair pathway predict glioblastoma survival. *J Clin Oncol* 2010;28:2467-74.
3. Templeton AJ, Ace O, McNamara MG, et al. Prognostic role of platelet to lymphocyte ratio in solid tumors: a systematic review and meta-analysis. *Cancer Epidemiol Biomarkers Prev* 2014;23:1204-12.

4. Hanahan D, Weinberg RA. The hallmarks of cancer. *Cell* 2000;100:57-70.
5. Johansen JS, Jensen BV, Roslind A, et al. Serum YKL-40, a new prognostic biomarker in cancer patients? *Cancer Epidemiol Biomarkers Prev* 2006;15:194-202.
6. Iwamoto FM, Hottinger AF, Karimi S, et al. Serum YKL-40 is a marker of prognosis and disease status in high-grade gliomas. *Neuro Oncol* 2011;13:1244-51.
7. Bhardwaj R. Regulation of YKL-40 in sterile inflammation and its role in glioblastoma in vivo, Ph.D. thesis, : Virginia commonwealth university, Richmond, Virginia; 2014.
8. Horbinski C, Wang G, Wiley CA. YKL-40 is directly produced by tumor cells and is inversely linked to EGFR in glioblastomas. *Int J Clin Exp Pathol* 2010;3:226-37.
9. Francescone RA, Scully S, Faibish M, et al. Role of YKL-40 in the angiogenesis, radioresistance, and progression of glioblastoma. *J Biol Chem* 2011;286:15332-43.
10. Zhang W, Murao K, Zhang X, et al. Resveratrol represses YKL-40 expression in human glioma U87 cells. *BMC Cancer* 2010;10:593.
11. Lee CG, Da Silva CA, Dela Cruz CS, et al. Role of chitin and chitinase/chitinase-like proteins in inflammation, tissue remodeling, and injury. *Annu Rev Physiol* 2011;73:479-501.
12. Low D, Subramaniam R, Lin L, et al. Chitinase 3-like 1 induces survival and proliferation of intestinal epithelial cells during chronic inflammation and colitis-associated cancer by regulating S100A9. *Oncotarget* 2015;6:36535-50.
13. Faria SS, Fernandes PC, Jr., Silva MJ, et al. The neutrophil-to-lymphocyte ratio: a narrative review. *Ecancermedicalscience* 2016;10:702.
14. Akinci Ozyurek B, Sahin Ozdemirel T, Buyukyaylaci Ozden S, et al. Prognostic Value of the Neutrophil to Lymphocyte Ratio (NLR) in Lung Cancer Cases. *Asian Pac J Cancer Prev* 2017;18:1417-21.
15. De la Peña FA, YuferaSoler JC, Ivars MA. Neutrophil-lymphocyte ratio (NLR) as a prognostic factor in metastatic breast cancer. *Annals of Oncology* 2017;28:mdx365.046.
16. Han S, Liu Y, Li Q. Pre-treatment neutrophil-to-lymphocyte ratio is associated with neutrophil and T-cell infiltration and predicts clinical outcome in patients with glioblastoma. *BMC Cancer* 2015;15:617.

17. Lopes M, Carvalho B, Vaz R, et al. Influence of neutrophil-lymphocyte ratio in prognosis of glioblastoma multiforme. *J Neurooncol* 2018;136:173-80.
18. Coppinger JA, Cagney G, Toomey S, et al. Characterization of the proteins released from activated platelets leads to localization of novel platelet proteins in human atherosclerotic lesions. *Blood* 2004;103:2096-104.
19. Louis DN, Perry A, Reifenberger G, et al. The 2016 World Health Organization Classification of Tumors of the Central Nervous System: a summary. *Acta Neuropathol* 2016;131:803-20.
20. Demirci U, Yaman M, Buyukberber S, et al. Prognostic importance of markers for inflammation, angiogenesis and apoptosis in high grade glial tumors during temozolomide and radiotherapy. *Int Immunopharmacol* 2012;14:546-9.
21. Mason MT, McNamara MG, Tieu MT. Reduction in neutrophil-lymphocyte ratio during initial concurrent chemo radiotherapy is prognostic for the survival of glioblastoma patients. *Neuro Oncol* 2014;16(suppl 2):ii25-ii.
22. Gandhi P, Khare R, Garg N, et al. Immunophenotypic signature of primary glioblastoma multiforme: A case of extended progression free survival. *World J Clin Cases* 2017;5:247-53.
23. Bambury RM, Teo MY, Power DG, et al. The association of pre-treatment neutrophil to lymphocyte ratio with overall survival in patients with glioblastoma multiforme. *J Neurooncol* 2013;114:149-54.
24. Alexiou GA, Vartholomatos E, Zagorianakou P. Prognostic significance of neutrophil- to-lymphocyte ratio in glioblastoma. *NeuroimmunolNeuroinflamm* 2014;1:131-4.
25. McNamara MG, Lwin Z, Jiang H, et al. Factors impacting survival following second surgery in patients with glioblastoma in the temozolomide treatment era, incorporating neutrophil/lymphocyte ratio and time to first progression. *J Neurooncol* 2014;117:147-52.
26. Zadora P, Dabrowski W, Czarko K, et al. Preoperative neutrophil-lymphocyte count ratio helps predict the grade of glial tumor - a pilot study. *Neurol Neurochir Pol* 2015;49:41-4.
27. Libreros S, Garcia-Areas R, Iragavarapu-Charyulu V. CHI3L1 plays a role in cancer through enhanced production of pro-inflammatory/pro-tumorigenic and angiogenic factors. *Immunol Res* 2013;57:99-105.
28. Duru S, Yuce G, Ulasli SS, et al. The relationship between serum YKL-40 levels and severity of asthma. *Iran J Allergy Asthma Immunol* 2013;12:247-53.